



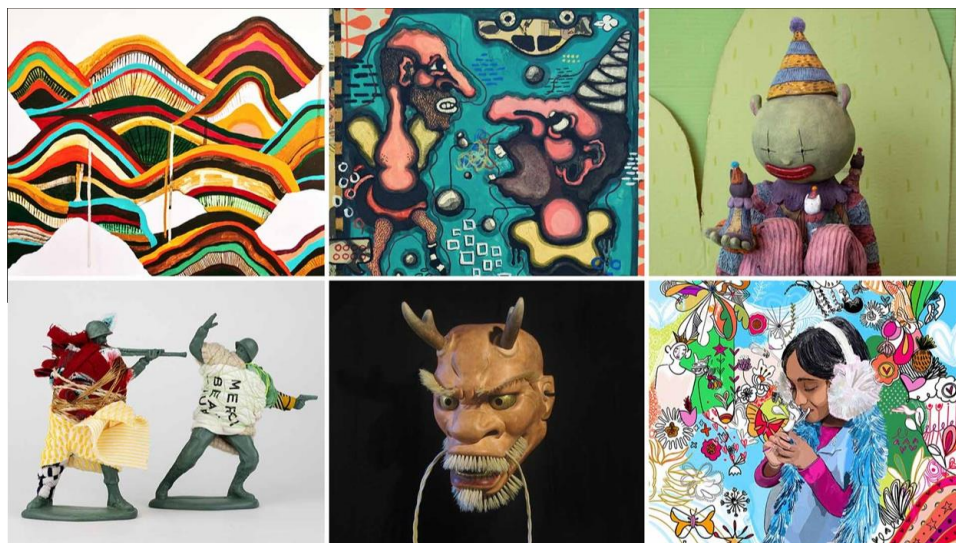
FOR IMMEDIATE RELEASE

Contacts:

Shari Gasper | Director of Communications and Editorial Content | sgasper@overture.org | 608.443.1756

Mary Cait McManamon | Social Media and Editorial Content Manager | mmcmanamon@overture.org | 608.665.9367

[Click here for photos.](#)



Overture Galleries' fall exhibitions reception is Thursday, Oct. 3

Madison, Wis. (Sept. 25, 2024) —Join us for a [reception and artists' talks](#) celebrating [Overture Galleries' fall exhibitions](#) on **Thursday, Oct. 3**. The reception, featuring artists from all five galleries, runs from **5:30-8:30 p.m. with artists' talks at 6 p.m.** on Rotunda Stage in Overture's lower level. Don't miss this opportunity to dive deeper into the exhibitions, hear from the artists and mingle with other art lovers!

Exhibitions in Galleries I, II and III run through Sunday, Dec. 1, and the Playhouse Gallery exhibition runs through Sunday, Nov. 17. The Rotunda Gallery "Her Art" exhibition runs through Sunday, Nov. 10.

Overture Galleries are always free and open to the public during regular business hours and before and after performances. Most artwork in our exhibitions is for sale.

GALLERY I: Abandoned Abundance

Erin Liljegren & Christina Ruhaak

Tuesday, Sept. 3 – Sunday, Dec. 1, 2024

[Erin Liljegren](#) and Christina Ruhaak create tactile environments enhanced by their vivid and complex use of color. Liljegren investigates the deprivation of natural resources and the over-consumption of consumer goods using paint and repurposed materials. Ruhaak amasses and layers the remnants of domestic life as commentary on global frictions and the consequences to families and communities.

GALLERY II: Masks & Mirrors

Jolynn Reigeluth & Hideki Suzuki

Tuesday, Sept. 3 – Sunday, Dec. 1, 2024

[Hideki Suzuki](#) and [Jolynn Reigeluth](#)'s joint exhibition blends observations, imagination and humor in our everyday lives. Suzuki's allegorical masks and Reigeluth's satirical portraits explore myth, history and human absurdities, igniting introspective laughter and peculiar emotional revelations.

GALLERY III: A Place of Whim and Wonder

Sydney Berkeley & Poornima Moorthy

Tuesday, Sept. 3 – Sunday, Dec. 1, 2024

This collection of vibrant, whimsical and multifaceted works by [Sydney Berkeley](#) and [Poornima Moorthy](#) embody the magic of life and allude to notions such as the fanciful experience of childhood, the hidden beauty twinkling within each moment and the intense human experience of being alive.

PLAYHOUSE GALLERY: In Search of Awe

PhotoMidwest

Tuesday, Aug. 27 – Sunday, Nov. 17, 2024

Photographic images capable of evoking a sense of awe possess a distinctiveness that makes them stand out from the ordinary. They have the power to evoke emotional or visceral reactions. This juried exhibition highlights the awe-inspiring photography created by members of [PhotoMidwest](#).

ROTUNDA GALLERY: Her Art

Various Artists

Curated and organized by high school student Shay Roy-Lewis

Tuesday, Sept. 10 – Sunday, Nov. 10, 2024

[Her Art](#) is a showcase of work by female-identifying teen artists that empowers girls to celebrate themselves not for what they look like, but for who they are.

Visit OvertureStore.org to purchase or browse available artwork. All sales made through Overture Galleries support local artists and the greater Madison community. Gallery representatives are also available upon request to meet with patrons about purchases. Contact galleries@overture.org.

OVERTURE CENTER FOR THE ARTS in Madison, Wis., is a 501(c)(3) nonprofit arts organization that features seven state-of-the-art performance spaces and four galleries where national and international touring artists, nine resident companies and hundreds of local artists engage people in nearly 700,000 educational and artistic experiences each year. Overture's mission is to support and elevate our community's creative culture, economy and quality of life through the arts. overture.org

###